

Artisan Cabinetry LLC

All Aspects Of Fine Woodworking

913.367.7973

- *KITCHEN CABINETS*
- *VANITIES*
- *DESKS*
- *COMPUTER DESKS*
- *ENTERTAINMENT CENTERS*
- *BOOKCASES*
- *COUNTERTOPS*
- *CLOSET ORGANIZERS & MORE*

Artisan Cabinetry LLC

Reasons To Buy Artisan Cabinets

913.367.7973

- Hardwood Face Frames
- Mortise & Tennon Joints In Face Frame
- Veneer Plywood Carcase
- No Particle Board
- Custom Made To Fit
- Custom Stains & Finishes
- Dovetailed Drawers
- Built To Last

Artisan Cabinetry LLC

“Custom Plus” Face Frame Cabinets

913.367.7973

Face Frames

- *Hardwood (FAS Grade)*
- *Stub Mortise & Tennon Joints*
- *Made To Fit (no filler boards)*

Carcase Construction

- *Seven Layer Veneer Plywood 23/32” (GIS-So. Bk.)*
- *Back 1/4” Veneer Plywood*
- *Glued Under Pressure*
- *Non Visible Nails*
- *Rabbet Joint For Back*
- *Dado Joint For Bottom or Biscuit Joint*

Drawers

- *Subfront and Back 3/4” Solid Wood, 1/2” Hardwood Sides*
- *Bottoms 1/4” Veneer Plywood (dado joint for bottom)*
- *Dovetail Joint (half blind joint)*
- *Premium Quality Metal Roller Bearing Drawer Slides*
- *Fronts 3/4” Hardwood or 23/32” Veneer Plywood*

Sanding Exposed Parts

- *Sanded to 220 Grit*

Raised Panel Doors

- *Solid Wood*

Finish

- *Custom Stains and Finishes*

Hardware

- *Customers Choice of Hardware*

Artisan Cabinetry LLC

“Custom Plus” Euro Cabinets

913.367.7973

Carcase Construction

- *Seven Layer Veneer Plywood 23/32” (G1S-So. Bk.)*
- *Edge Banding 5/16” Hardwood*
- *Back 1/4” Veneer Plywood*
- *Glued Under Pressure*
- *Non Visible Nails*
- *Rabbit Joint For Back*
- *Dado Joint For Bottom or Biscuit Joint*

Drawers

- *Subfront and Back 3/4” Solid Wood, 1/2” Hardwood Sides*
- *Bottoms 1/4” Veneer Plywood (dado joint for bottom)*
- *Dovetail Joint (half blind joint)*
- *Premium Quality Metal Roller Bearing Drawer Slides*
- *Fronts 3/4” Hardwood or 23/32” Veneer Plywood 1/8” Hardwood Edge Banding*

Sanding Exposed Parts

- *Sanded to 220 Grit*

Raised Panel Doors

- *Solid Wood*

Finish

- *Custom Stains and Finishes*

Hardware

- *Customers Choice of Hardware*

Artisan Cabinetry LLC

“Standard” Face Frame Cabinets

913.367.7973

Face Frames

- *Hardwood (#1 common grade)*
- *Stub Mortise & Tennon Joints*
- *Made To Fit (no filler boards)*

Carcase Construction

- *Seven Layer Plywood 23/32” (G1S-So. Bk.)*
- *Back 1/4” Birch Plywood*
- *Glued Under Pressure*
- *Minimum Visible Nails*
- *Rabbit Joint For Back*
- *Dado Joint For Bottom*

Drawers

- *Subfront and Back 3/4” Solid Wood, 1/2” Baltic Birch Sides*
- *Bottoms 1/4” Birch Plywood (dado joint for bottom)*
- *Dovetail Joint (half blind)*
- *Quality Metal Roller Bearing Drawer Slides*
- *Fronts 3/4” Hardwood or 23/32” Veneer Plywood*

Sanding Exposed Parts

- *Sanded to 120 Grit*

Raised Panel Doors

- *Solid Wood*

Finish

- *Custom Stains and Finishes*

Hardware

- *Customers Choice of Hardware*

Artisan Cabinetry LLC

“Standard” Euro Cabinets

913.367.7973

Carcase Construction

- *3/4” Birch Plywood*
- *Back 1/4” Birch Plywood*
- *Glued Under Pressure*
- *Minimum Visible Nails*
- *Rabbit Joint For Back*
- *Biscuit Joint For Top and Bottom*

Drawers

- *Subfront and Back 3/4” Solid Wood, 1/2” Baltic Birch Sides*
- *Bottoms 1/4” Birch Plywood (dado joint for bottom)*
- *Dovetail Joint (half blind joint)*
- *Quality Metal Roller Bearing Drawer Slides*
- *Fronts 3/4” Plywood Edge Banded*

Sanding Exposed Parts

- *Sanded to 120 Grit*

Flat Panel Doors (Raised Panel Optional)

- *3/4” Plywood Edge Banded*

Finish

- *Custom Stains and Finishes*

Hardware

- *Euro Concealed Hinges*
- *Customers Choice of Hardware*

ARTISAN CABINETRY CABINETS COMPARISON		
ITEM	OUR CABINETS	MANUFACTURED CABINETS
Case Parts	All Wood-No Particle Board. 3/4" Plywood Case. 1/4" Plywood Back.	Most, 1/2" Particle Board, Vinyl Covered. Back Material, 1/8" Thru 1/4" Particle Board Vinyl Covered.
Shelves	All 3/4" Thickness With 1/4" Thick Hardwood Front Edge With 1/8" Roundover Edge. More Load Capacity.	Most 1/2", 5/8" & 3/4" Thickness Particle Board (less strength than plywood). Square Edge, Vinyl Coating.
Shelves	Full-Depth Shelves In Base Cabinet, Fully Adjustable. 50% More Storage Capacity. Optional 2/3 Shelf For Easy Accessibility..	Most, Half Shelf, Non Adjustable. Some Full Depth.
Drawers	Dovetailed Construction, All Wood 1/2" sides, 3/4" Front & Back & 1/4" Bottom Material. Dadoed Bottom Joint.	Construction Methods: Butt Joints With Staples, Doweled Construction & Dovetailed. Most, 1/2" Particle Board Vinyl Covered. 1/4" Bottom.
Drawers	Adjustable Drawer Front. Easy Adjustment With Only A Screwdriver.	Most, Non Adjustable, Some Adjustable.
Drawer Runner	Blum 230M With 100 lb. Capacity Standard. Runner Mounted To Case Side. Full Extension Optional.	Most, 50 lb. & 75 lb. Capacity. Plastic Brackets Mounted To Back Of Cabinet.
Base Cabinet Construction	Solid Wood Strechers Front & Back With Solid Wood Hanging Rail.	Most, Plastic Corner Blocks With Particle Board Hanging Rail, Some Wood Corner Blocks With Wood Hanging Rail.
Doors	Solid Wood & Wood Veneer Doors With Proper Expansion Void. Space Balls Prevent Panel From Rattling.	Some, Vinyl Covered MDF. Most, No Expansion Void Or Space Balls.
Hinges	Blum Adjustable Hinges. Cliptop 120 On Custom Plus & Compact 33 On Standard Grade Cabinets. Very High Quality.	Most, Lower Quality.
Faceframes	Solid Hardwood With Mortise & Tenon Joints. Both Inside Edges Rounded Over. Eliminates Scrapes To Hands.	Most, Pocket Hole Joints. Inside Edges Not Rounded Over
Cabinet Interior	Birch Plywood Natural Finish. Open Cabinetry with Matching Exterior Finish.	Some, Open Cabinetry Not Matching Exterior Finish.
Rollout Shelf & Trays	All Wood-No Particle Board. 3/4" Plywood Bottom & 3/4" Hardwood Sides, Front & Back. Trays: 1/2" Sides & Bottom Plywood. Super Strong. Blum 430E Full Extension Runner. 100 lb. Capacity.	Some, 1/2" Particle Board Sides, Front, Back & 3/16" Bottom.
Molding	Solid Wood To Match Cabinetry.	Some, Paper Or Vinyl Wraped With MDF Core.
Finish	Latest Precatalyzed Lacquer, Exceeds All Specifications By Cabinet Manufactures Association (ANSI/KCMA A161.1-1995)	Some, Lower Grade Lacquer.
Stains	Customers Choice, Unlimited Colors.	All, Limited Colors.

CHECKLIST

date printed

3/13/04 7:02 PM

This checklist is designed to help you determine your own personal kitchen requirements.

Cabinetry

Cabinet Style	<i>faceframe or euro</i>	Door Style	
Wood Type		Color	

Appliances

Electric or Gas Range		Built-in Oven	
Electric or Gas Cooktop		Built-in Oven Double Oven	
Downdraft Cooktop		Microwave Oven	
Grill		Built-in Oven/Microwave Comb.	
Refrigerator		Trash Compactor	
Freezer		Waste Disposer	
Dishwasher		Ventilation System	
		Other	

Accessories

Work Space		Organizers	
breadboard (wood)		pullout shelf	
breadboard (plastic laminate)		lazy susan (lower)	
cutting board		lazy susan (upper)	
chopping block		blind-corner shelves	
work surface in a drawer		storage bin with dividers	
hideaway table		tilt-out bins	
drop leaf counter extension		pullout garbage bin	
moveable island		spring-loaded garbage drop	
countertop insert		can rotator	
butcher block counter		drawer dividers	
stowaway island		spice rack	
pull-out ironing board		vertical cabinet partitions	
pull-up mixer shelf		apothecary drawers	
Appearance		Display Space	
valance		display shelf	
crown molding		plate rack	
appliance panels		glass shelves	
		gallery rail	
		gallery shelf spice rack	
		glass doors	
Storage Space		Appliance Space	
door in door storage		corner appliance garage	
pull down racks		tambour appliance garage	
tilt-out trays		microwave oven shelf	

Other Design Considerations

Sink and Fixtures		Type of Wall Covering	
Special Window Treatment		Type of Lighting	
Type of Flooring		Space Arrangement Changes	
Type of Countertop		Special Design Needs	

Special Options

Bake Center		Special Sink		Second Sink	
Center Work Island		Full Height Cabinet		Range Hood	

Six Basic Kitchen Designs

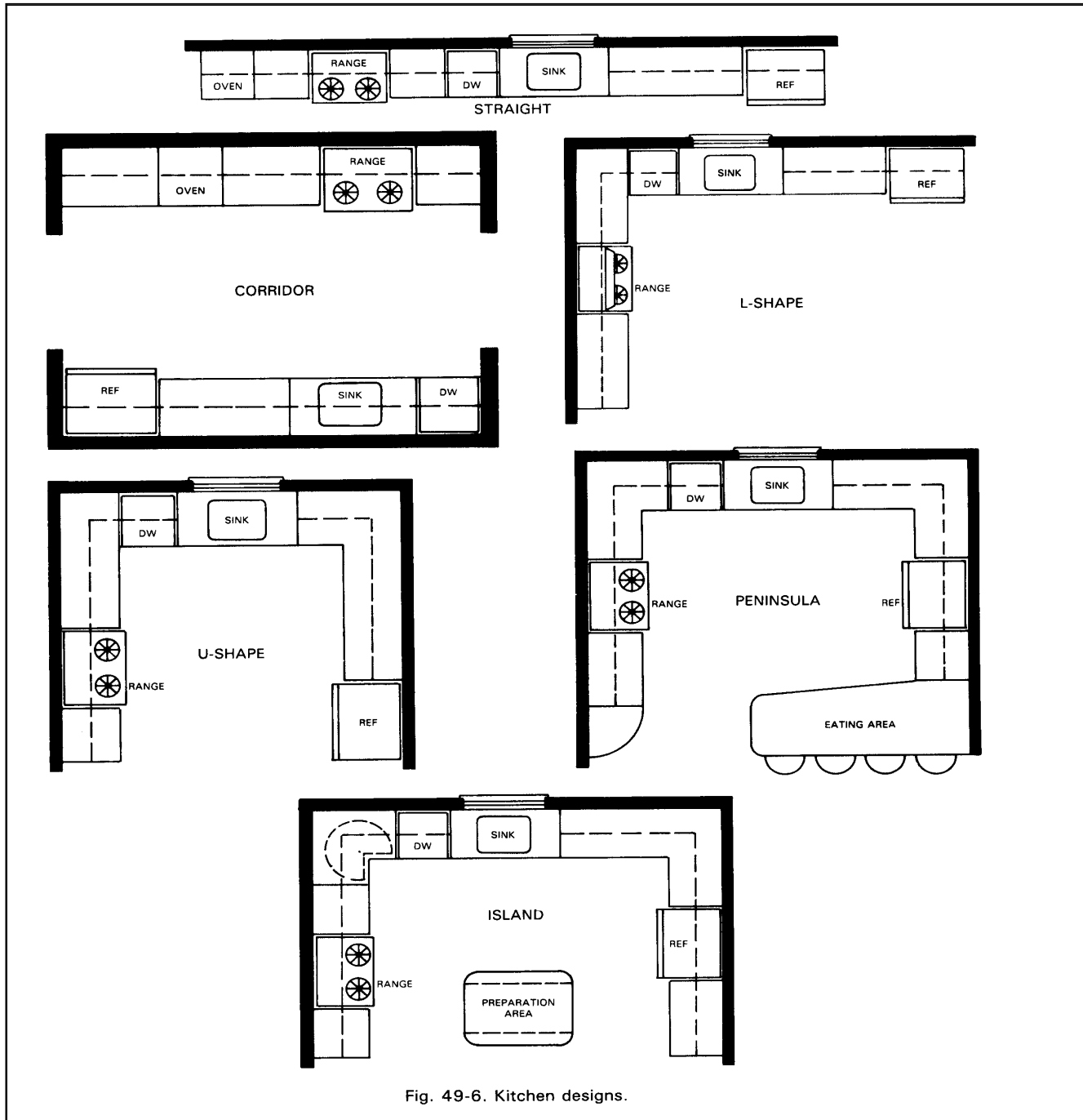
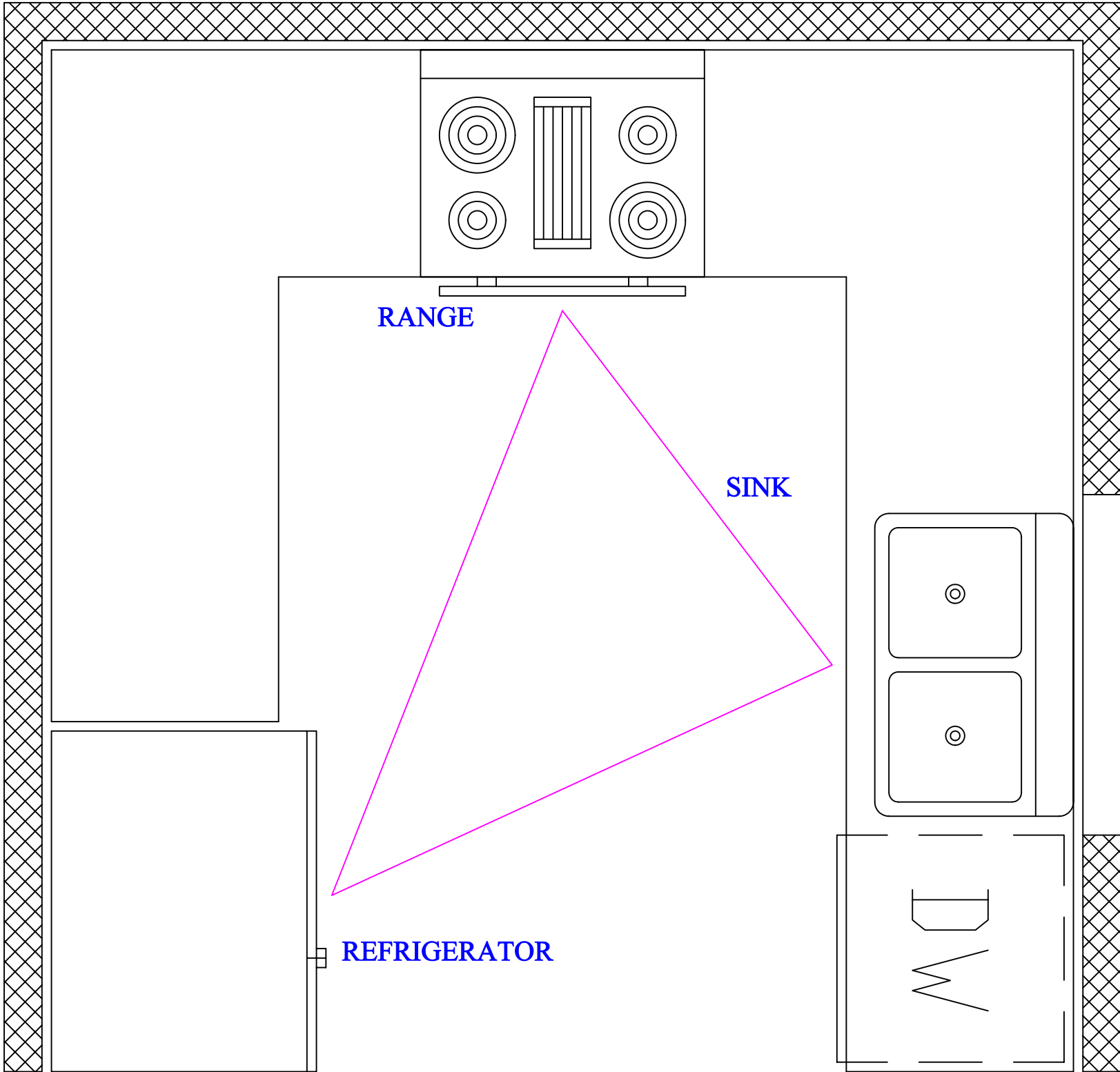


Fig. 49-6. Kitchen designs.

Job name
Date

The Work Triangle Saves Steps.

Total Length of Three Sides Should Fall Between 12 and 22 Ft.



Artisan Cabinetry, LLC

Standard Cabinet Dimensions

